

## E-Business Solutions

SouthWare NetLink works with existing technology in the SouthWare Excellence Series™ to provide a comprehensive e-business solution. You can easily publish any of your business data to authorized users and receive data back from them that is validated before updating your files. You can also customize every aspect of your e-business site with a variety of features you can customize yourself without hiring expensive help.

## Benefits

Since NetLink is tightly integrated with the SouthWare Excellence Series you can get the best of the two computer worlds:

- For high-volume processing of business information you get the power, speed, control, and built-in sophistication of SouthWare's mature business applications running on your internal system. Your day-to-day work is not hindered by the limitations of browser-based access.
- You and your partners can use Web browsers to access selected data and send data to be updated using the "stateless" transaction-based mode of intranets and the Internet. You are working with the same data file formats as the standard applications, so your data can be on-line if you wish.

The screenshot displays the SouthWare NetLink interface for user Carl Sanders. The page includes a navigation bar with tabs like 'Start', 'Place an Order', 'Open Orders', 'Order History', 'Unpaid Invoices', 'Service Orders', and 'Account Info'. A 'Wow!' message box is present. The main content area is divided into sections: 'My Account' with links for 'Review Open Orders', 'Place an Order', 'Order History', 'Review Unpaid Invoices', 'Make On-Line Payment', and 'Review/Request Service Calls'; 'Account Info' with contact details for Carl Sanders; 'Account Status' showing 29 open orders and a balance of \$11,999.67; and 'Recent Activity' with a table of transactions.

Activity Type	Date	Reference
Sales Order	07/11/17	Order #: 308
Sales Order	07/11/17	Order #: 309
Sales Order	07/11/17	Order #: 310
Sales Order	07/11/17	Order #: 307
Sales Order	07/09/17	Order #: 215
Service Order	07/09/17	Svc Order #: 0010000008 Scheduled: 03/04
Sales Order	07/07/17	Order #: 303
Sales Order	07/07/17	Order #: 306
Invoice	07/07/17	Invoice #: 441 Origin: Sales Billing
Service Order	07/07/17	Svc Order #: 00100000105 Scheduled: 00/00
Service Order	07/07/17	Svc Order #: 00100000107 Scheduled: 00/00
Payment	07/05/17	Document #: 432432 Payment - Check # 432*
Payment	07/05/17	Document #: 432432 Payment - Check # 432*
Payment	07/05/17	Document #: 432432 Payment - Check # 432*
Payment	07/05/17	Document #: 432432 Payment - Check # 432*

Customer Online Self Service Portal

SouthWare NetLink is a revolutionary tool that lets you provide simple and controlled browser-based network access to your company data files. It can be used for Internet, intranet, and extranet applications.

# FEATURES & FUNCTIONALITY

## EASY SET UP

- Works “out of the box” for SouthWare users
- Works with standard SouthWare data files

## FLEXIBLE SERVER CONFIGURATION

- Portable to any server that supports CGI
- Allows live or off-line data
- Supports single or multiple company files

## CONTROLLED DATA ACCESS

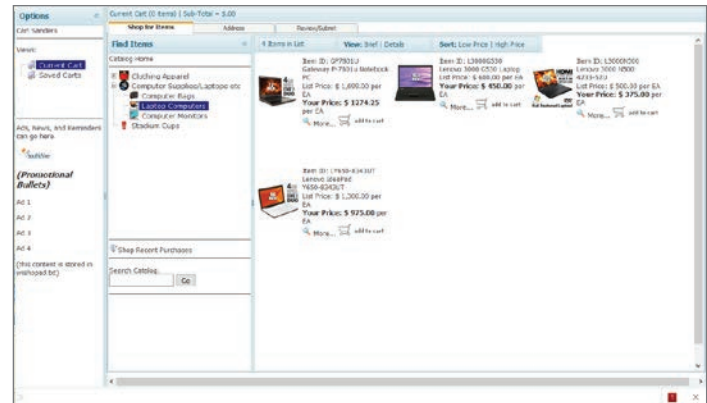
- Valid requester logins
- Security masking per requester and request
- Data access limited to fields you include in a request - no free-format data requests
- Session info links each request to a valid requester login
- Automatic time-out for sessions
- Optional logoff function

## UNLIMITED CUSTOMIZABLE REQUEST TYPES

- Numerous pre-defined requests
- Option to create requests for any data or requester type
- Customizable HTML templates provide “look” for each request page - easily edited via HTML editor or text editor
- Numerous standard variables and unlimited user-defined variables to extract data
- Templates use cascading style sheets for easy modification

## COMPREHENSIVE ORDER ENTRY FUNCTION

- Order shopping cart is saved until order is submitted
- Provides defaults and pricing per customer
- Catalog lookup
- Automatically create customer for new sale
- Easily add/change/delete line items
- Numerous options to show item pictures, notes, and discount from list price
- Optionally supports SSL encryption for secure transmission of data



Shopping Cart

## DATA EXTRACT VIA REPORTMATE™

- Any data available in ReportMate may be included in a request
- Option for browser table formatting
- Data input via ImportMate
- Receive form data as importable data files
- Validation to ensure data integrity
- Allows interactive or batch (off-line) update

## EXAMPLE REQUESTS YOU CAN PROCESS USING NETLINK:

- Sales orders submitted from customers and employees
- Customer request for account balance and related details
- Employee request for customer-related info
- Customer requests for service
- Requests for marketing materials
- Changes of address or phone number
- Request for details of an invoice
- Request for details of a purchase order
- Review of product history
- Vendor review of open purchase orders
- Review of shipped status of open sales
- Review of product catalog and pricing
- Dispatch status of open service calls
- Internal review of current financial statements