

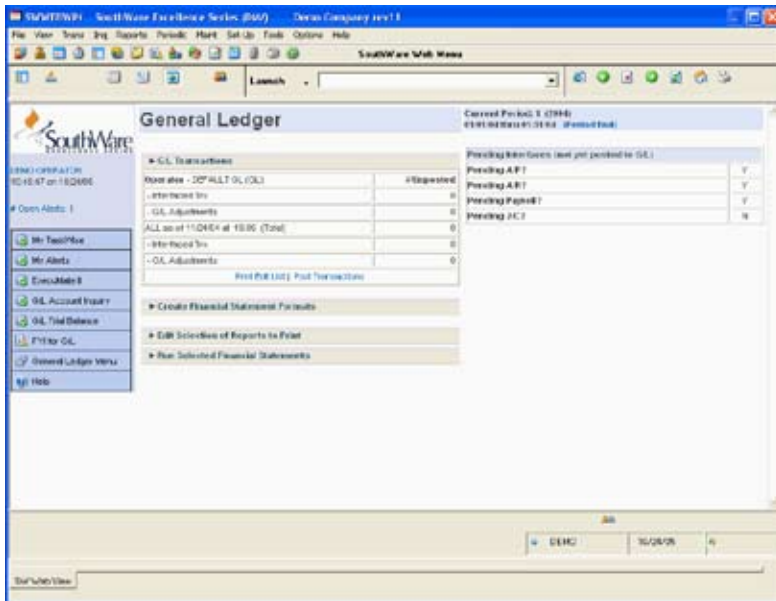
# General Ledger

Your general ledger is where all your financial information comes together. For up-to-date information, attractive financial reports, and insight behind the reports, supervise your finances daily with SouthWare's General Ledger.

S O U T H W A R E   E X C E L L E N C E   S E R I E S   >

## BENEFITS

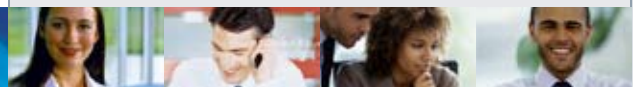
## FINANCIAL MANAGEMENT



Smart WebView Menu Portal

- Have instant insight into every G/L amount and transaction
- Get the financial reports you need when you need them
- Have financial reports that look the way you want them to look
- Get today's financial statements, not just last month's
- Easily provide the information your auditors request
- Eliminate most manual work in G/L as your other SouthWare products automatically update your financial information
- Compare this year's performance to previous years
- Compare actual performance to your budget
- Quickly update your budgets throughout the year as your estimates change
- Analyze the performance for your different financial reporting entities as well as for your entire company

SouthWare's General Ledger gives you daily financial management tools, not just a once-a-month report. Your other SouthWare products can keep General Ledger as current as the last transaction. Your financial statements are ready whenever you want to see them. And the answers to why your financial statements got that way are only a keystroke away.



## Features & Functionality

### Financial Statement Features

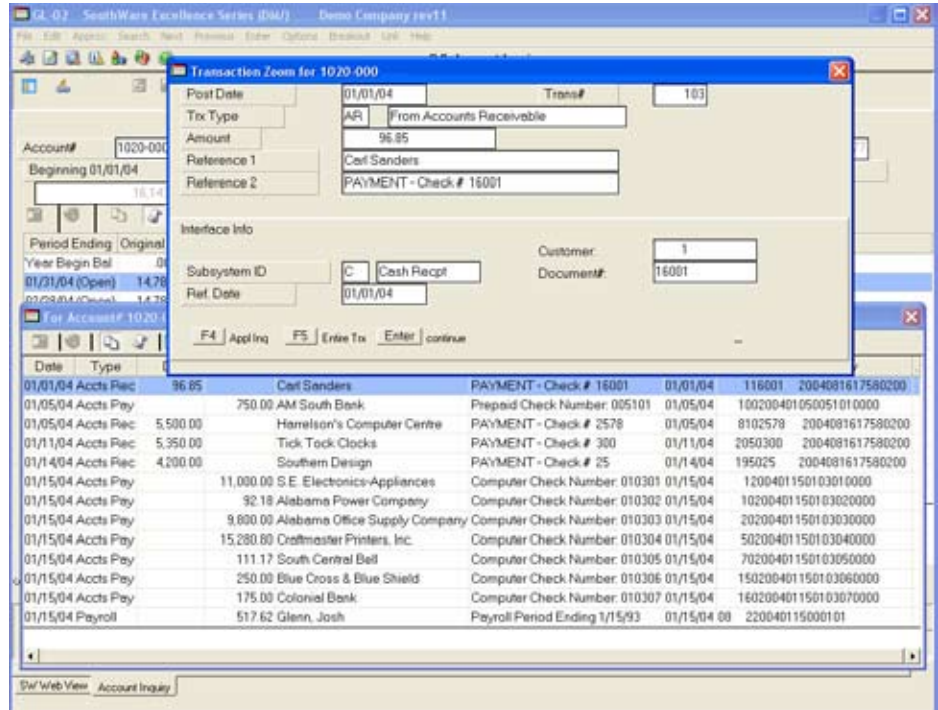
- Income Statement
- Balance Sheet
- Source/Application of Funds
- FASB 95 Cash Flow
- Custom supporting schedules
- Standard reports for easy set up
- Option to customize report layout or columns of information
- Column choices include variances, trends, department or multi-company comparisons
- Up to 16 columns per report
- Period, Quarter, Year reporting
- Multi-company consolidation
- Print options include footnotes and output to spreadsheets or word processing

### Transaction Features

- "Ledger-lock" for easy entry/review
- Interface from other SouthWare products
- Accruals with automatic reversal
- Prior-Year adjustments that automatically roll the change into the current year
- Memo-type entries for non-financial data

### G/L Account Features

- User-defined account number structure - up to 4 parts and 6 digits per part with a maximum of 15 characters including dashes between parts
- Predefined chart option for easy set up
- 12 or 13 accounting periods
- Current, Original, and Pending budget per period per account
- Comparative amounts for last 5 years
- Budget workfile for interactive budget review and change
- Assign accounts to reporting entities



Zoom from G/L to Source Documents

### Inquiry/Other Reporting

- On-screen review of an account and zoom to any source document for a transaction
- Trial balance and Transaction History
- Optional interface to Cash Flow Ledger, ExecuMate II, ExcelReport, ImportMate
- Optional use of spreadsheet interface


  
 SOFTWARE SOLUTIONS. THE RIGHT WAY. THE RIGHT PEOPLE.
   
 Phone: 662-328-2400
   
 Fax: 662-328-4858
   
 E-mail: sales@btmsolutions.com
   
 Address:
   
 572 Yorkville Road East
   
 Columbus, Mississippi 39702

